



Cover: Z85/26 eucalyptus

-  spring core
-  grid
-  seat depth
-  headrest
-  armpart
-  tuck
-  metal colour
-  contrasting thread
-  casual

olivia

24670

The heartbeat of the room.

olivia 24670 is far more than just a piece of furniture - it is the heartbeat of the room. The seat depth adjustment adapts to your needs so that you can either sit upright or lean back comfortably. The optional headrest and armpart adjustment provide additional comfort, whether you want to relax alone or curl up in the large cosy corner - perfect for family moments or quiet evenings for two. The metal runners or legs, available in various colours, round off the design.


W.SCHILLIG

SOFAS



NL70
sofa incl. seat depth adjustment

198/107/85/43
headrest adjust. = KV2 (surcharge)
armpart adjust. = SV2 (surcharge)



NL80
large sofa incl. seat depth adjustment

218/107/85/43
headrest adjust. = KV2 (surcharge)
armpart adjust. = SV2 (surcharge)



NL90
large sofa incl. seat depth adjustment

238/107/85/43
headrest adjust. = KV2 (surcharge)
armpart adjust. = SV2 (surcharge)

ELEMENTS WITH ARMPART RIGHT



NL70R
sofa w/ arm incl. seat depth adjustment

169/107/85/43
headrest adjust. = KV2 (surcharge)
armpart adjust. = SV1 (surcharge)



NL80R
large sofa w/ arm incl. seat depth adjustment

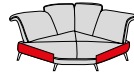
189/107/85/43
headrest adjust. = KV2 (surcharge)
armpart adjust. = SV1 (surcharge)



NL90R
large sofa w/ arm incl. seat depth adjustment

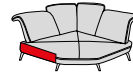
209/107/85/43
headrest adjust. = KV2 (surcharge)

CORNER ELEMENTS



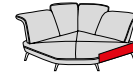
W130K
cuddly corner middle without seat depth adj. deliv. separated

167/167/94/43
headrest adjust. = KV2 (surcharge)



W130R
cuddly corner right without seat depth adj. deliv. separated

167/170/94/43
headrest adjust. = KV2 (surcharge)



W130L
cuddly corner left without seat depth adj. deliv. separated

167/170/94/43
headrest adjust. = KV2 (surcharge)

ELEMENTS WITH ARMPART LEFT



NL70L
sofa w/ arm incl. seat depth adjustment

169/107/85/43
headrest adjust. = KV2 (surcharge)
armpart adjust. = SV1 (surcharge)



NL80L
large sofa w/ arm incl. seat depth adjustment

189/107/85/43
headrest adjust. = KV2 (surcharge)
armpart adjust. = SV1 (surcharge)



NL90L
large sofa w/ arm incl. seat depth adjustment

209/107/85/43
headrest adjust. = KV2 (surcharge)
armpart adjust. = SV1 (surcharge)

OTTOMANS & ACCESSORIES



G80
ottoman

82/63/43/43



G140
extra large ottoman

142/63/43/43

Z
base leg

END ELEMENTS RIGHT



MG70R
element with ottoman
incl. seat depth
adjustment

114/107/85/43

headrest adjust. =
KV1 (surcharge)



KL10R
one arm chaise incl.
seat depth adjust-
ment

134/206/85/43

headrest adjust. =
KV1 (surcharge)
armpart adjust. =
SV1 (surcharge)

END ELEMENTS LEFT



MG70L
element with ottoman
incl. seat depth
adjustment

114/107/85/43

headrest adjust. =
KV1 (surcharge)



KL10L
one arm chaise incl.
seat depth adjust-
ment

134/206/85/43

headrest adjust. =
KV1 (surcharge)
armpart adjust. =
SV1 (surcharge)

PILLOWS



UN70.
lumbar pillow 70 cm
seat

62/9/20/0



UN80.
lumbar pillow for 80
cm seat

72/9/20/0



UN90.
lumbar pillow for 90
cm seat

82/9/20/0

olivia

24670



Flexible seat depth

The back of some units can be moved backwards to increase the seat depth, see type plan. The total depth changes.

Flexible armparts

The armparts are foldable and fitted with a notch function for a surcharge. Item no. = SV1, SV2.

Flexible headrest

Some articles can be equipped with a headrest adjustment with notch function (surcharge, item no. = KV1, KV2).

Metal colours for legs

Some legs can be ordered in high-gloss chrome-, silver, bronze- or black-coloured. Please indicate.

Contrasting thread

In some leather and fabric colours this model can be supplied with a contrasting-coloured thread, at no surcharge.

ORDER INFORMATION

Flexible armparts:

Maximum load capacity up to 25 kg, they are not seats.

Back sides of sofas:

All pieces are genuinely upholstered at the back.

Positioning diagram:

Please send us a positioning diagram, depending on the different variations available. The connecting sides got marked in red for some elements in the type guide.

Base leg Z:

If elements and sofas without or with 1 armpart are to be placed directly against elements or sofas without or with 1 armpart, a base leg Z is required and must be ordered separately.

Connecting sides:

For a surcharge, the connecting sides can be supplied in the original cover instead of stretch

www.schillig.com

fabric.

Seam appearance:

Decorative, felled or double seams may appear different in fabric and leather versions. For manufacturing reasons, seams may be left out of the fabric version or replaced with simple seams.

Contrasting thread:

This model is available in leather and some fabric colours with contrasting colour thread at no extra charge. You will find the specified colours in our fabric/leather trolley. Please state the no., otherwise tone-in-tone will be delivered.

All of the dimensions given are approximate dimensions in cm in width/depth/height/seat height. We reserve the right to make changes. The measures depend on armparts without function for surcharge.

Seat depth: approx. 60 cm

Seat depth with function:

Armpart width with function full down: approx.

32 cm

Armpart height with function full down: approx.

61 cm

Armpart width with function full up: approx.

20 cm

Armpart height with function full up: approx.

70 cm

Especially casual upholstery:

The upholstery is especially casually processed to create a certain appearance with a super soft surface. The covers may already show a pronounced wavy appearance on delivery, which is intentional due to the design and construction and may become even more pronounced with use. This is not a quality defect, but a model-related characteristic.

Cozy corners W...:

The big cozy corners are delivered as an "disassembled article" due to their oversize. The delivery includes 1 seat part and 4 back parts as well as the legs and the assembly material. Assembly instructions are enclosed.

Digital fabric/leather and colour samples:

The visual appearance of the covers and colour samples may vary, samples in accordance - colour and structure deviations possible.

Note on upholstery construction:

For this model, inlets with chamber cushions have been processed in the back cushions. This can lead to the marking of individual chambers and is a typical feature of the product.

W.SCHILLIG

LEGS



metal runner black

F T9



metal leg **diff. metal col.**

F J3



metal leg **diff. metal col.**

F L6

Metal colours:

Some of the metal legs are available in different metal colours. Please indicate the colour when ordering.

Powder-coated:

The colours M21 silver, M56 bronze and M99 black are powder-coated.

Leg and floor protection:

Slim furniture legs with a small gliding surface

exert increased pressure on the floor. For sensitive floors, we recommend fitting glides/ an underlay to protect against scratches and pressure marks.

AVAILABLE METAL COLOURS



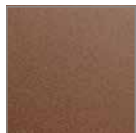
high-gloss chrome

M20



silver

M21



bronze

M56



black

M99

olivia

24670

ORDER CHECKLIST

- Articles and cover
- Flexible armparts (surcharge)
- Manually headrest adj. (surcharge)
- Metal colour for legs
- Ottomans
- Lumbar pillows
- Base leg Z
- Contrasting thread

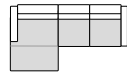

W.SCHILLIG

LIVING EXAMPLES



Cover: V88/44 ivory

corner combination

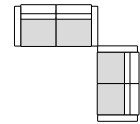


323x206



Cover: Z66/22 elephant

sofa combination
NL 90 - NL 80

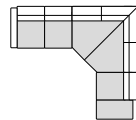


345x325



Cover: Z85/26 eucalyptus

corner combination



336x281

UPHOLSTERED FURNITURE FRAME STRUCTURE



The design of the cross-section shown here is based on a sample and serves to illustrate the upholstery structure.

- 1. Frame** – seat/back frame - metal construction, armpart - derived timber product
- 2. Seat suspension** with permanently elastic wave springs
- 3. Seat upholstery structure** – spring core with di-olen cover incorporated into **ergo**-PUR-foam
- 4. Back suspension** due to upholstery strap
- 5. Back upholstery structure** of high-quality mix of polyester fibres and foam sticks, filled in cushion boxes

Upholstered furniture from passion.

For 75 years, this passion has led to the creation of high-quality and special pieces of furniture and designer furniture - sofas that combine elegant and contemporary design with first-class comfort. We stand for craftsmanship, trend-setting ideas, appealing design and know-how from Germany. The result is upholstered furniture with guaranteed first-class comfort and attention to detail. When selecting the materials used, we pay attention to sustainability and the conservation of resources.

- Traditional craftsmanship down to the last detail
- High-quality, environmentally friendly materials
- Careful & precise workmanship
- Cooperation with renowned furniture designers
- Production according to DIN & RAL quality guidelines of the Deutsche Gütegemeinschaft Möbel e.V.
- Regularly tested product quality "Made in Germany"
- Development at the Upper Franconian location in Ebersdorf near Coburg
- Carefully selected fabric and leather cover collections in many colours for a wide range of requirements.

W.SCHILLIG GmbH & Co. KG
 Am Weinberg 20 - 22
 96237 Ebersdorf bei Coburg
 GERMANY
 Telephone: +49 9562 37-0
 Telefax: +49 9562 37-500
 E-Mail: info@schillig.de

